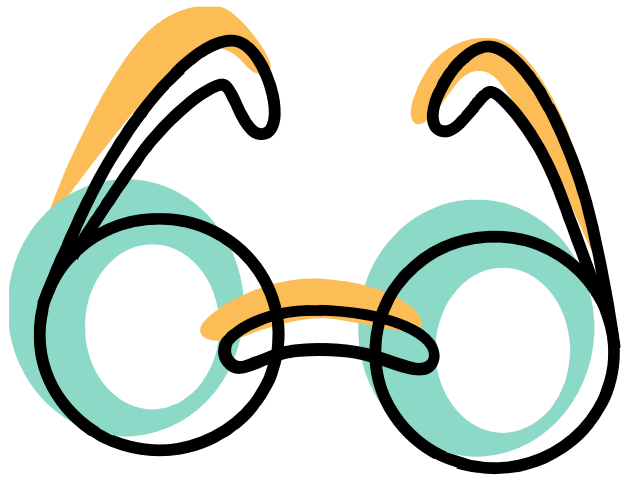


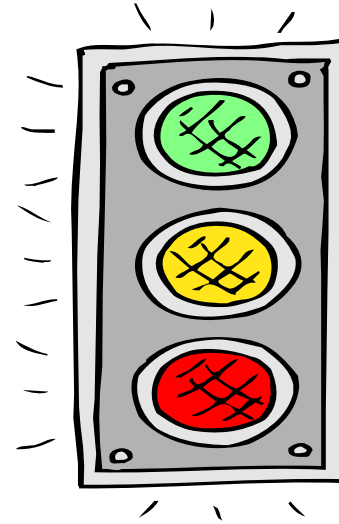
Focus



Is my writing on topic?

Organization

Does my writing have ...



- A beginning?
- A middle?
- An end?

Does it flow?



Support

Do I add MORE about my topic?

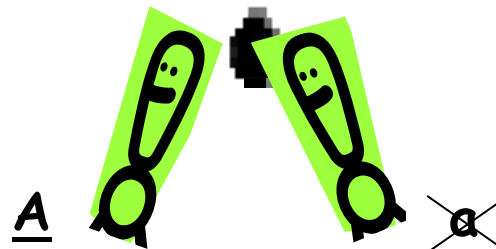
- Facts/Details
- Use your senses
- WOW words
- Examples
- Reasons

Conventions

Have I checked my...



~~atc~~ cat



- Punctuation?
- Spelling?
- Capital letters?
- Different kinds of sentences?